



the wise connection

Issue 23

November 2019

From the WISE Office

Dear WISE Families,

Winter is upon us! We have enjoyed a beautiful autumn, but the shorter days and colder weather are here to stay. It is always a joy to watch the children celebrate newly fallen snow and cold winds from within the warmth and shelter of their winter woollens. Dressing for the weather with mittens, hats and scarves keeps everyone comfortable. With our upcoming Lantern Walk on November 8th, our Kindergarten, Class 1 and Class 2 children will celebrate bringing light into this season of darkness. Our hope for everyone is that our inner light is carried forth through the winter ahead, and shines outward into the world through our deeds and that you find renewed connection and enjoy a much deserved rest during our November break.

With gratitude and blessings,
The WISE Admin Team 🍀



Waldorf Independent School of Edmonton (WISE)



Phone:
780.466.3312



Address:
7211 96A Ave Edmonton AB T6B 1B5



Website:
www.thewise.ca



Email:
info@thewise.ca
(Melina) principal@thewise.ca
(K.C.) registrar@thewise.ca
(Keely) administrator@thewise.ca
(Alisa) volunteer@thewise.ca



WISE Facebook Page:
[Waldorf Independent School of Edmonton](https://www.facebook.com/WaldorfIndependentSchoolofEdmonton)

Facebook Parent Group:
[The WISE Parent Connection](#)
(Please contact parentpartnership@wese.ca to join our Facebook parent group)

Enchanted Garden Store Hours:
By Appointment: store@thewise.ca

Important Dates:

Nov 2 School Work Bee
Nov 8 Lantern Walk, K - Gr 2
Nov 11 Bulk order opens
Nov 11-15 Fall Break, no programming
Nov 16 Sunflowers ends
Nov 17 Bulk order closes
Nov 18-19 Parent Teacher Conferences, no K - Gr 9 programming
Nov 20 WESE Annual General Meeting
Nov 22 Bulk order pick up
Nov 25 Rosebuds / Marigolds ends
Nov 29 Winter Fair set up, no programming
Nov 29 Candlelight Market
Nov 30 Winter Fair

Dec 2 First week of Advent - Advent Spiral
Dec 3 Last Day of Daisies and Marigolds
Dec 9 Second Week of Advent - Assembly
Dec 13 Winter Concert
Dec 16 Third Week of Advent - Assembly
Dec 20 Noon Dismissal (Grades), no programming for Kindergarten
Dec 23 - Jan 3 WISE Winter Break, no programming

Parent Coffee every Wednesday 8:30 am - 9:15 am in the WISE Gym.

Ottewell Artisan Farmers' Market every Thursday 4 pm - 7 pm in the WISE gymnasium.

Adult Choir every Tuesday, 4 PM - 5 PM in the WISE music portable.



Office Notes

Dress for the Weather

The internal health committee would like to ask families to ensure their children are sent to school with appropriate winter wear every day, along with a spare hat and a pair of mittens. 🍃

Save the Dates

Annual General Meeting:

- November 20, 2019 at 7:00pm

School Workbees:

- November 2, 2019 at 10:00am - 3:00pm
- February 8, 2020 🍃

Bulk Order

The November Bulk Order is due November 17th at 10pm.

There is no bulk order in December so this is our last bulk order before the Holidays!

Plan ahead. Get your baking supplies, hot chocolate, spices, and anything else you may need, and support our lovely school at the same time!

<https://foodclub.org/wise/login> 🍃



WISE Athletics

WISE Athletes Win Bronze!

The WISE co-ed soccer team finished their inaugural season with a bronze medal in Edmonton Public Schools Tier 3 Intramurals. With the guidance of our dedicated coaches Jessica Sykes, Sophia Burak and Gio Cassagrande, our players improved with each game, culminating in the season-end win. Each game was supported by excited parents and siblings, made more fun by adventures in carpooling and ecstatic cheering on the side lines. We are so proud, and excited to see what next year will bring!

Photo credit: Lisa Read at Ladybird Photography



Thank you!

Michaelmas

Thank you to all our Michaelmas volunteers! Obstacles were overcome, courage was requested, and dragon bread was feasted upon once again. Thank you to those who helped with all of it. 🍀

Photo credit: Sydney Lee



Pumpkin Walk

The Fairs Committee would like to extend a heartfelt thank you to all those who helped make this year's Pumpkin Walk the wonderfully successful evening that it was. What a special night we had. The bake sale table minders, those who brought food donations, those who organized, the actors who all willingly took up their parts and characters with ease, those who came and helped set it

all up, those that stuck around to help take it all down, those who bought pumpkins and helped carve them and those who bought tickets and came to spread the joy, thank you! A special thanks to Mother Nature for providing another beautiful night. 🍀

Photo credit: Raphael Bustamante



WISE Events

Lantern Walk

The WISE kinder, grade one and grade two children will come together in a walk under the stars as they 'bring light into the world', from 5:45 pm - 7 pm on November 8, 2019. All WISE families are welcome to attend this sweet and reverent lantern festival, but please ensure that all children are accompanied by their adults to preserve the mood of this special early childhood celebration of light. 🌱



Learning Link

Have you ever wondered why Waldorf students knit? Ms Harrison, our wonderful handworks teacher, found a great link to explain it:

<https://phillywaldorf.com/why-waldorf-students-knit/> 🌱



Candlelight Market

Looking for a chance to visit our local vendors before Winter Fair and perhaps do some shopping without your little people watching? Want to pre-purchase both admission and activity tokens for the fair the next day to avoid the line?

Join us on Friday, November 29th between 7 - 9 pm to do some holiday shopping! This event is for Adults Only. Babes in arms are welcome. Admission for the evening is \$2. 🌱



Winter Fair

You are invited to the Winter Fair on Saturday, November 30th, from 12 pm - 4 pm

Adult admission is \$4, and most children's activities are \$2.

This event is our largest festival of the year! It requires EACH FAMILY to sign up for at least ONE volunteer shift, so please do so early to get the shift you want!

We also need parents help to ensure we have enough treats and Secret Store items for all the children.

Class 1, 2, Kindergarten, Nursery and Parent-Tot families are asked to craft 15 small items each for the Secret Store. **Need ideas? - check out our WISE Pinterest Board!**

Class 3, 4 and 5 families are asked to bring 1 dozen cookies each for the Cookie Cave - a wondrous nook where fresh baked cookies float before your very eyes. Please package them individually in small clear plastic bags with colour coded ribbons on them to indicate the following:

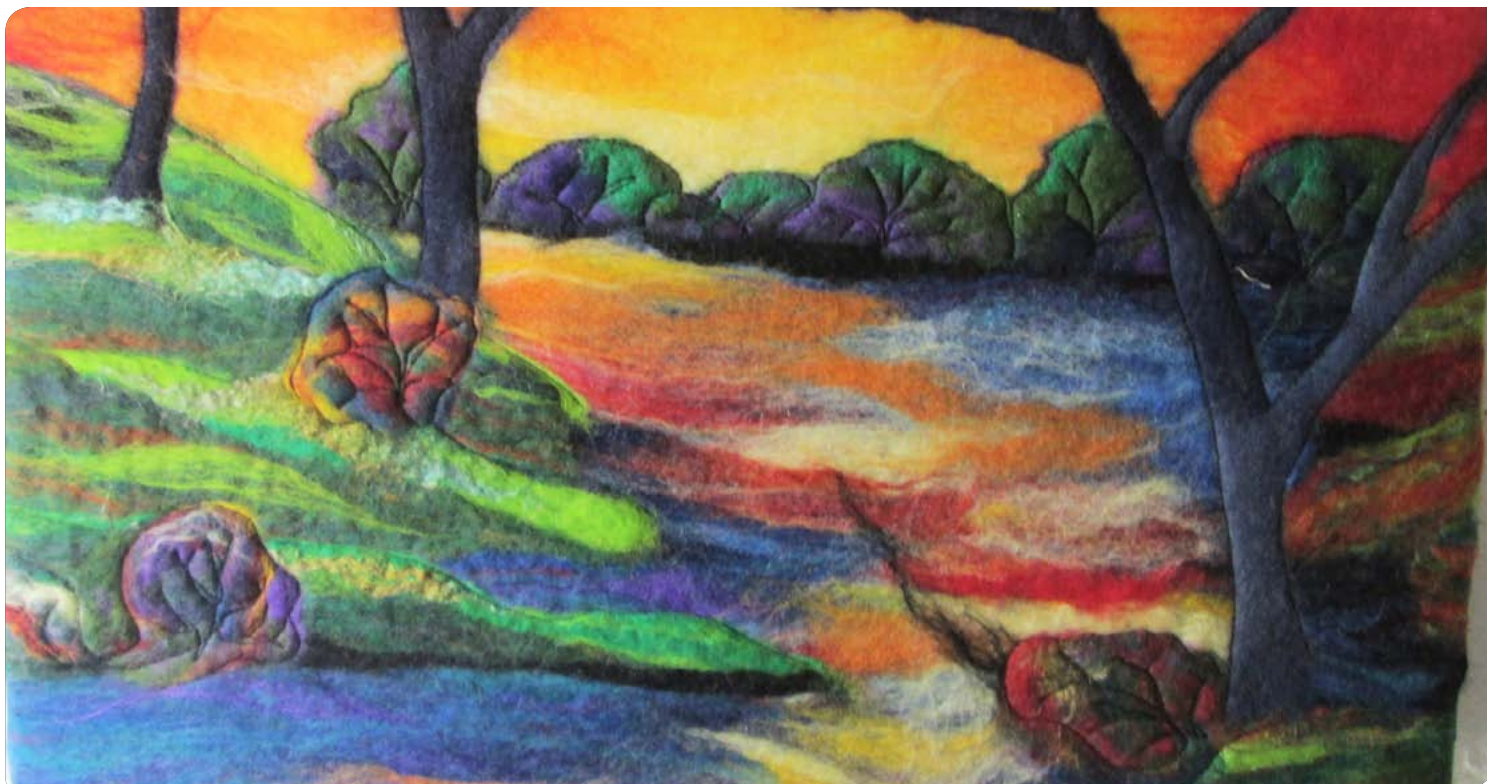
White- regular
Green- vegan
Blue- gluten free

Class 6, 7, 8/9 families - We need items for the Café! Savory items are recommended but everything yummy is welcome!

Items will be collected the week prior to Winter Fair, except Cafe items which we ask to have dropped off Friday, November 29th.

~The Fairs Committee 🌱





WESE AGM

Waldorf Education Society of Edmonton - Annual General Meeting

Dear WESE Members,

The Waldorf Education Society of Edmonton (WESE) is holding its Annual General Meeting (AGM) beginning promptly at 7 pm on Wednesday, November 20th, 2019. The AGM includes presentation of the society's financial reports, committee reports, election of new board members and amendments to the bylaws. We invite all of our members to join us for this important event.

In preparation for the AGM, we are currently recruiting nominations for new board members. If you wish to join the board or nominate someone as a board member please submit nominations to boarddevelopment@wese.ca. The nomination process will open on October 21, 2019 and close on November 2, 2019. Nominees will be required to complete an application that will be reviewed by the nominations committee. The new board members will be officially voted in during the AGM. If you have any questions about the nominating and voting process, we would be happy to answer them. Questions can also be sent to boarddevelopment@wese.ca.

WESE Board members meet every 3rd Thursday of each month from 5:30 pm to 7:30 pm. There are also three mandatory meetings per year with the Waldorf Independent School of Edmonton (WISE) faculty and administration. Each Board member generally participates and/or chairs a WESE or WISE committee. Committees include areas such as finance, site

development, parent partnership, enrolment, fundraising, policy, communications and market liaison. Committees serve an essential role in the operations and leadership of our accessible school and other programs.

The positions up for election this year are:

Vice-President (2 year Term)

Treasurer (2 year Term)

Executive Director (2 year Term)

Director(s) (2 year Term)

2 Members-at-Large (1 year Term)

Please visit our WESE website and scroll down to see the Board Position Descriptions and Community Committee Descriptions, which are currently being updated.

Please Note:

To be eligible to vote, nominate or stand for office, members must be in good standing. Membership payments must be received one day before the AGM; one vote per family membership.

<http://www.wese.ca/community/membership/>

The AGM will take place in the WISE school gymnasium, promptly at 7 p.m. A map is located at the bottom of: <http://www.thewise.ca> (7211 96A Ave Edmonton) 🌱

Highlight of the Class

Class Two

Class 2 has had an autumn of exploration! We've spent the first two months of school with the woodland creatures of our fables and folktales, ridden alongside the gallant Michael and relished in the beauty of the changing seasons. Class 2 has especially enjoyed our weekly Nature Studies classes in which we have searched for seeds, insects and bugs, and drawn the changes brought upon by the Autumn Equinox. In afternoon play, Class 2 has learned the value of resourcefulness and working with others to achieve our goals. In this, Class 2 has discovered the importance of patience, listening to one another, and considering the thoughts and ideas of others, no matter how different they may be from our own. Our form drawings have shown us that there is never only one way of looking at something, that if we flip it upside down or add a little shading, it can transform and become something even more beautiful than we originally thought. Class 2 continues to practice their reading and writing, drawing and math skills while exploring the life lessons brought upon by our fables and folktales. Much like the characters of our fables, Class 2 is expressing their inquisitive nature by fearlessly exploring the 'what if?' questions. This inclination toward the 'what if?' is met by our Wednesday afternoon painting class in which we explore what happens when we mix and blend or lift our colours in new ways. The second grade has brought upon a lot of changes for our class and introduced new ideas and routines, and while these changes have come to us in full force, Class 2's sense of warmth and togetherness remains strong. As we all gear up for a new month, Class 2 wishes you a November full of love and light! 🍀

Photo credit: Sara Larsen



Waldorf Education Society of Edmonton (WESE)



Phone:
780.466.3312



Address:
7211 96A Ave Edmonton AB T6B 1B5



Website:
www.wese.ca



Email:
president@wese.ca
parentpartnership@wese.ca
volunteer@wese.ca



WESE Facebook Group:
Waldorf Education Society of Edmonton



Waldorf Education
Society of Edmonton

Wish List

Needed by the school, should you have it to give away (or know where we can acquire it for a great deal):

Metal wash basin for washing dishes
Foam sleds (no crazy carpets or hard plastic sleds, please) for the children to share at recess on the new hill we're about to have

Please contact newsletter@thewise.ca if you can help. Thank you! 🍀

We encourage your comments, suggestions, and submissions to newsletter@thewise.ca. The deadline is the first of the month. Anything after the deadline will be considered for the following month. All submissions are subject to editing and approval.

Graphic design by Holly Boisvert